



TRILITH

Sales Office: 590 Heatherden Ave, Fayetteville, GA 30214

The Warwick

250 4th Street - F406

The 4 bedroom, 3.5 bathroom Warwick Village home with private courtyard is perfect inside and out. The main floor offers 10' ceilings, an open gourmet kitchen with huge breakfast bar, adjacent dining and living area with fireplace and large windows overlooking the courtyard. Private guest bedroom with full bathroom on main floor. The upper level has an owner's suite with walk-in closets and a private balcony that overlooks the courtyard. The two additional bedrooms each have spacious closets. The detached two-car garage is accessible off of the courtyard. Courtyard features private patio perfect for entertaining.



* See agent for details.

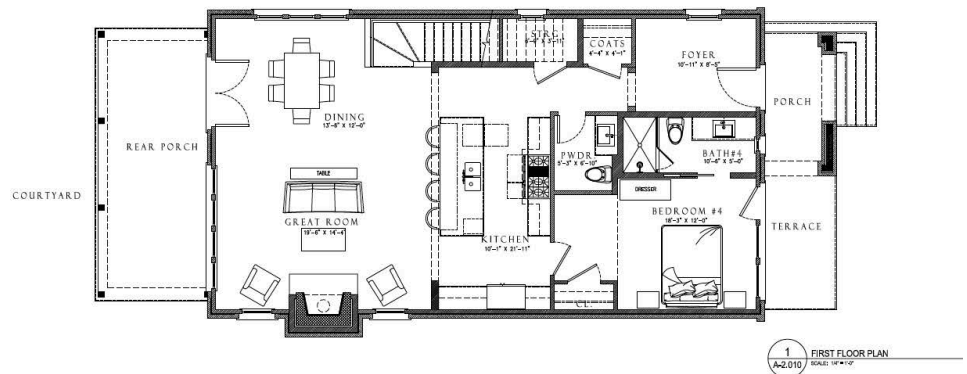
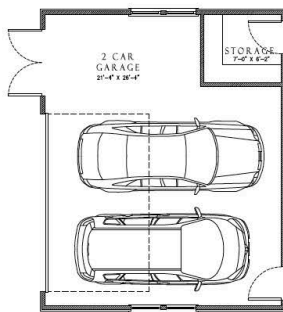
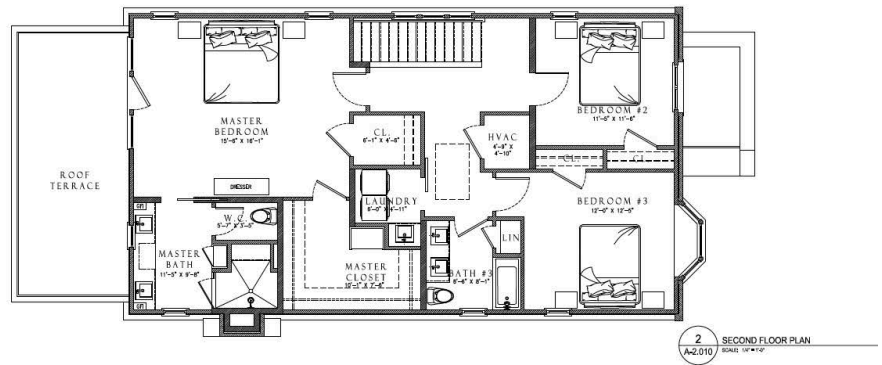
678.519.1008 | Trilith.com



The Warwick

4 Bedrooms & 3.5 Baths | 3,041 sq. ft.

- 10' ceilings on main
- Gourmet kitchen
- Fireplace
- 2.5 car detached garage
- Trilith green building certification
- Geothermal HVAC system
- Prewired for electric vehicle charging station
- Professional landscaping
- Roof Terrace off Owner's Suite



678.519.1008 | Trilith.com