



TRILITH

Sales & Leasing Office: 590 Heatherden Avenue, Fayetteville, GA 30214

Sheldon w/ Garage Suite

240 4th Street - F405

\$1,449,000

The Sheldon Village home with welcoming front porch has 4 bedrooms and 4.5 bathrooms. The main floor offers 10' ceilings, a spacious dining room, open gourmet kitchen with breakfast bar, adjacent breakfast nook, butler's pantry and walk-in pantry, living room with fireplace and private guest bedroom with en-suite bathroom. Upper level has an owner's suite with large walk-in closet, large laundry room, two additional bedrooms with en-suite bathrooms. This Village home includes a detached garage suite.



* See agent for details.

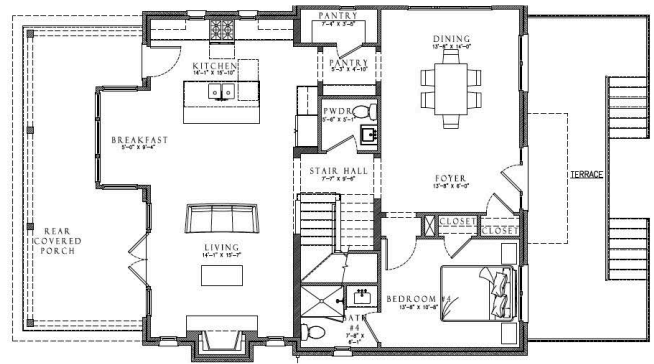
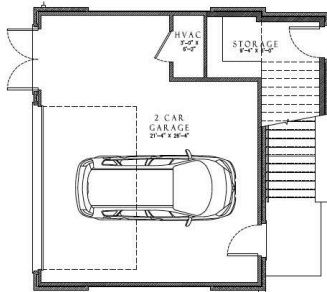
678.519.1008 | Trilith.com



The Sheldon

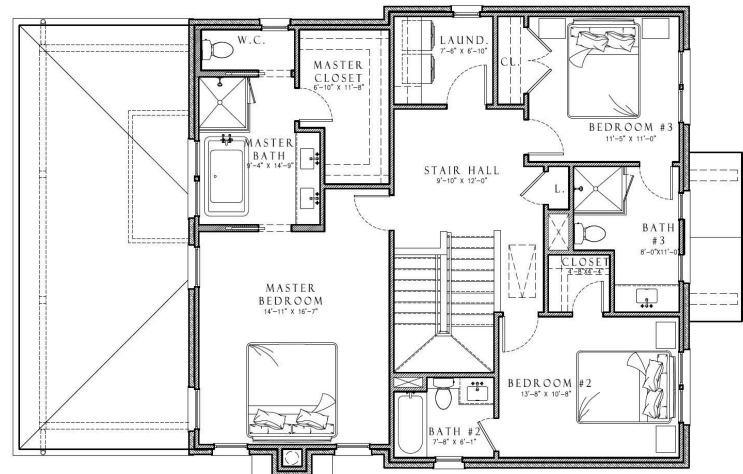
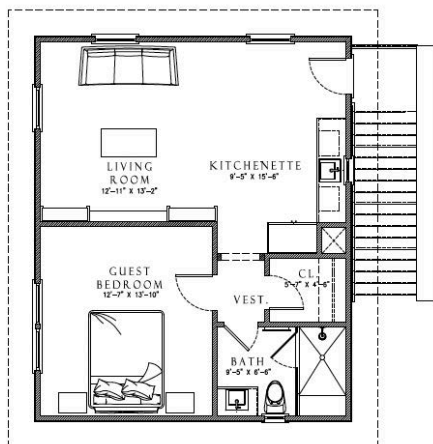
4 Bedrooms & 4.5 Baths | 2,446 + 644 sq. ft.*

- 10' ceilings on main
- Gourmet kitchen
- Fireplace
- Front terrace
- 2-car detached garage
- Trilith green building certification
- Geothermal HVAC system
- Prewired for electric vehicle charging station
- Professional landscaping



1 FIRST FLOOR PLAN
Scale: 1/8" = 1'-0"

1st Floor



2nd Floor

* sq. ft. various upon elevation

678.519.1008 | Trilith.com